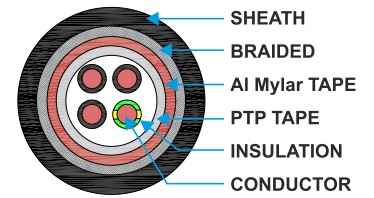




VFD Cables

VFD-Shielded Power Cable



Application

These high performance VFD cables are for dynamic industrial applications designed for the connection of motors to the control drives where there is requirement of electromagnetic compatibility. The shielding provided reduces the effects of electrical noise while providing a low impedance path to ground.

Properties

- Oil resistance
- Ozone resistance
- Excellent flame resistance and heat resistance
- UV resistance
- All-weather flexibility

Construction

- Conductor : Stranded fine copper conductor flexible, IEC-60228
- Insulation : XLPE insulation, high dielectric, tensile and mechanical properties.
- Colour code : 3 black cores+1 green/yellow
- Cores stranded in layers with optimal lay-length
- Aluminium mylar shielding tape (outward)
- Braid : Min. 85% coverage tinned copper braid.
- Sheath : Special TPE compound,

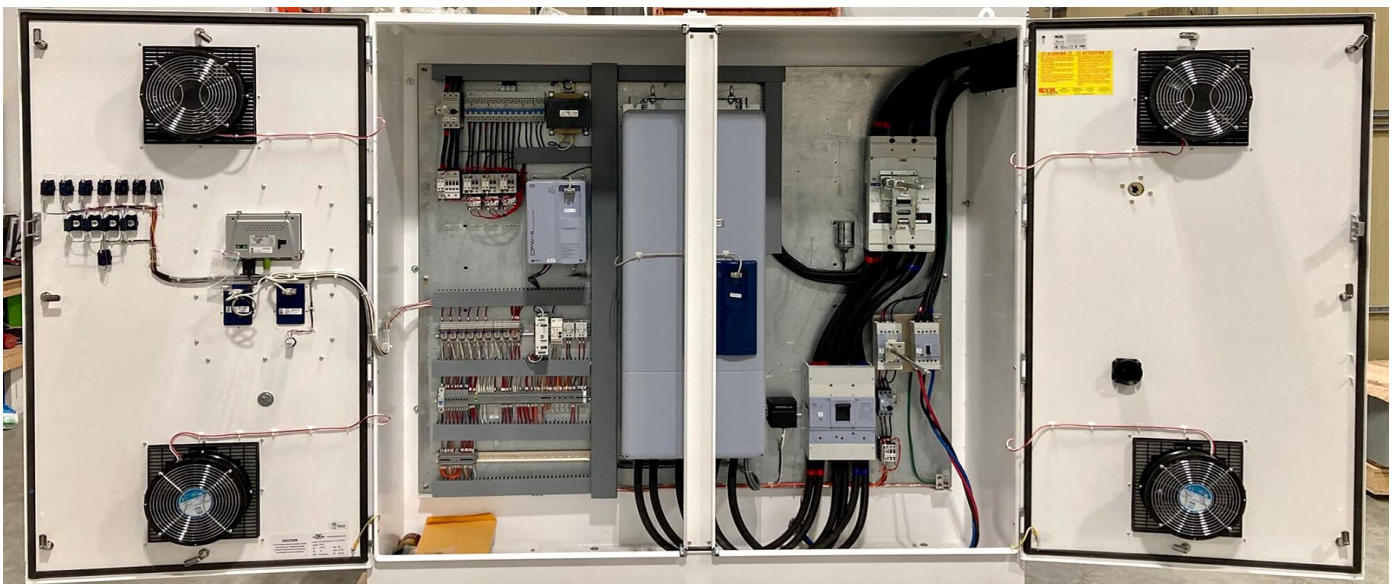
Technical Parameter

- CSA : 600V / 1000V
- CSA : FT-4
- TC-ER : 600V
- Rated temperature : -25°C to +90°C
- Test voltage : 6000V
- Bending radius : 15D - flexing & 7.5D fixed

2001 - VFD Cables

Dimension

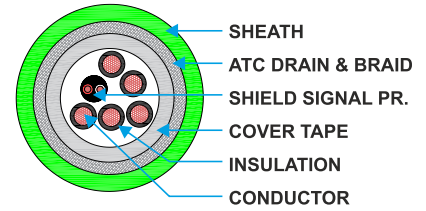
Part code	Cable Size Core x AWG	Stranding Nos x mm	Ampacity Amp	Nominal O.D. (IN.)	WT. (kg) per km
2001B04016	4x16	65 x 0.16	18	11.85	213
2001B04014	4x14	105 x 0.16	25	12.92	235
2001B04012	4x12	165 x 0.16	30	15.39	368
2001B04010	4x10	105 x 0.254	40	17.34	457
2001B04008	4x8	168 x 0.254	55	22.52	786
2001B04006	4x6	266 x 0.254	75	25.90	1121
2001B04004	4x4	413 x 0.254	95	30.20	1615





VFD Cables

VFD-Shielded Power Cable with Brake & Signal Pairs



2002 - VFD Cables

Application

These high performance VFD cables are for dynamic industrial applications designed for the connection of motors to the control drives where there is requirement of electromagnetic compatibility. The shielding provided reduces the effects of electrical noise while providing a low impedance path to ground.

Construction

- Conductor : Stranded fine copper conductor.
- Insulation : XLPE or oil resistant composite material, provide high dielectric, tensile & mechanical properties
- Color code : 3 black cores+1 green/yellow (Power)
- Color code : Black and white with printed numbers (Brake & Signal Pairs)
- Shield : 100% coverage aluminum/mylar foil with drain wire (Brake & Signal Pairs)
- Sheath : PVC Oil resistant composite material, Assembly (Brake & Signal Pairs)
- Laying up : Power core laid up together with brake & signal pair
- Filers : Low friction, non-wicking fillers provide increased flexibility in dynamic applications.
- Drain wire : Flat braid drain wire
- Braid : Min. 85% coverage tinned copper braid
- Outer sheath : Special TPE compound, oil, ozone, UV resistant, flame and heat resistant. All-weather flexibility.

Properties

- Oil resistance
- Ozone resistance
- Excellent flame resistance and heat resistance
- UV resistance
- All-weather flexibility

Technical Parameter

- CSA : 1000 Volt
- CSA : FT-4
- TC-ER : 600 Volt
- Rated temperature : 90°C Max.



Cable parameter with single pair

Part code	Power Conductor				Brake & Signal Pairs			Jacket Thickness (mm)	Nominal O.D. mm	WT. (kg.) PER 304Mtr
	AWG/ COND.	Stranding Nos x AWG	Ampacity (1)	Overall Drain	AWG/ NO. PAIRS	Stranding No. x AWG	Drain Wires AWG			
2002B14041P	14/4	105x34	25	16	16/1	65x34	18	1.778	15.70	97
2002B12041P	12/4	165x34	30	14	16/1	65x34	18	1.778	17.00	140
2002B10041P	10/4	105x30	40	14	16/1	65x34	18	1.778	19.30	190
2002B8041P	8/4	168x30	55	14	16/1	65x34	18	2.286	23.80	280
2002B6041P	6/4	266x30	75	14	16/1	65x34	18	2.286	26.65	374
2002B4041P	4/4	1050x34	67	18	14/1	105x30	16	2.921	35.30	657

Cable parameter with two pair

Part code	Power Conductor				Brake & Signal Pairs			Jacket Thickness (mm)	Nominal O.D. mm	WT. (kg.) PER 304Mtr
	AWG/ COND.	Stranding Nos x AWG	Ampacity (1)	Overall Drain	AWG/ NO. PAIRS	Stranding No. x AWG	Drain Wires AWG			
2002B14042P	14/4	105x34	25	16	16/2	65x34	18	1.778	17.65	127
2002B12042P	12/4	165x34	30	14	16/2	65x34	18	1.778	18.90	167
2002B10042P	10/4	105x30	40	14	16/2	65x34	18	1.778	21.80	229
2002B8042P	8/4	168x30	55	14	16/2	65x34	18	2.286	25.40	362
2002B6042P	6/4	266x30	75	14	16/2	65x34	18	2.286	28.20	533

Note : 1P=1pair, 2P=2pair